

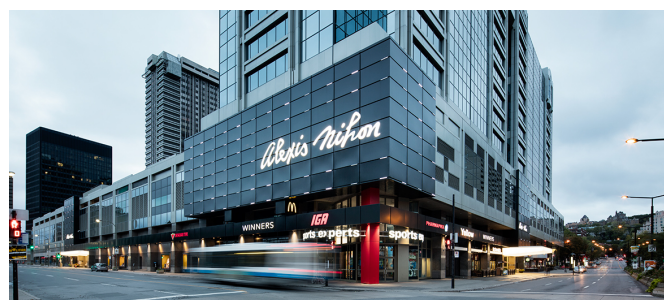
# ALEXIS NIHON

Montréal, Quebec



DIGITAL DISPLAY, STATIC DISPLAY

**A**lexis Nihon is a 2.4-million-square-foot urban complex located in downtown Montréal that beats to the rhythm of the 38,000 visitors, professionals and students who frequent it daily. Built in 1967, the year of the World Fair, Alexis Nihon is a multi-purpose business property featuring two office towers, a residential tower, a three-level shopping centre and indoor parking. With direct access to public transit (including Atwater metro station) and major expressways nearby, it is within walking distance of a number of important academic institutions and well-known residential and office towers.



## GENERAL INFORMATIONS

Annual traffic	13,220,910
Number of stores	100+
Gross area	389,000 ft <sup>2</sup>
Time spent per visit	66.4 minutes
Number of visits per month	5.0
Average purchase during a visit	\$ 68.80
Market population	1,404,087
Average household income	\$ 67,717

**neo**  
SHOPPING

**100+ SHOPPING MALLS**  
In 8 provinces

**660+ HD SCREENS**  
Across Canada

## PRODUCTS

Posters  
Digital Displays  
Banners  
Specialty Media

1500 Avenue Atwater Montréal,  
QC, Canada, H3Z 1X5

**700+ POSTERS & BANNERS**  
From coast to coast

[placealexisnihon.com](http://placealexisnihon.com)

Toll free 1-877-987-2334  
[www.neo-ooh.com](http://www.neo-ooh.com)